



Short programme & General information

Lyon, France

January 16-20, 2016

VENUES

BEST WESTERN HOTEL CHARLEMAGNE

The meeting will start on Monday 16th January afternoon and will be located at the Best Western Charlemagne Hotel in Lyon.



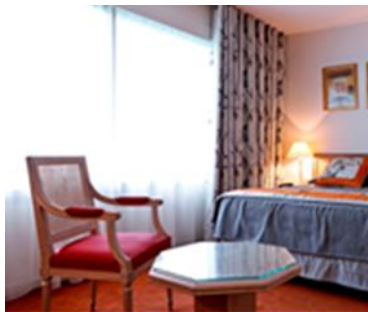
Best Western Hôtel Charlemagne ****

23 Cours Charlemagne – 69002 LYON

Tel. : +33 4 72 77 70 00 – Fax. : +33 4 78 42 94 84

E-mail : charlemagne@hotel-lyon.fr

www.hotel-lyon.fr



HOW TO REACH BEST WESTERN CHARLEMAGNE HOTEL

All roads lead to the Best Western Charlemagne Hotel...



From the Lyon Perrache Train Station

Take the Charlemagne exit
Down the escalator or by the elevator
Continue straight, you are on the « Cours Charlemagne »

From the Lyon Part-Dieu Train Station

By Train: connections exist between the station Part-Dieu and Perrache
By Trolley: take the T1 direction "Debourg", stop "Suchet"
By Subway: take the B line "Charpennes", change at the station "Charpennes", Take the "A" line "Perrache" and get off at the Perrache station

From the Lyon Saint Exupéry Airport

A special trolley "Rhône Express" brings you from the airport to the Part-Dieu train station. Then take the directions from this train station.

From the A43 freeway

At the end of the motorway, take the Southern Ring Road (Périphérique Sud) direction Marseille, exit at "Gerland". Cross Gerland always straight on. At the large Crossroads of the Tony Garnier Hall - Pasteur Mérieux, turn left on the Bridge "Pont Pasteur". Continue straight on the « Cours Charlemagne ».

From the A6 freeway

Take the direction « Lyon Centre ». Pass the Tunnel of Fourvière and take the 2nd exit "Gare Perrache-39b". Go straight on "Quai Perrache", take a right on "cours Suchet" and then take a left on "cours Charlemagne"

From the A7 freeway

Follow Direction "Centre Ville". Take exit n°1 and continue on "Quai Perrache", take a left on "Square Julien Gras"

From the A42 freeway

Follow the "Laurent Bonnevay Boulevard" on the right line direction "Lyon centre/Périphérique Nord/porte de la Pape, take exit n°4. Take a right on "chemin du Bac à Traille" at the roundabout, take a left on "avenue de Poumeyrol", at the roundabout take a right on "chemin de Wette Fays", take a left on "Grande Rue de St Clair" take a right on "cours Suchet" and then take a left on "cours Charlemagne"



Best Western Hôtel Charlemagne ****

23 Cours Charlemagne
69002 LYON

For more details
Twenty-four hours a day,
seven days a week:

04 72 77 70 00



RENESENG

MARIE CURIE INITIAL NETWORKS (ITN) , **Grant agreement 607415**



16-20 January 2017, Lyon

TRAINING SCHOOL PROGRAMME

2 ECTS credits

MONDAY 16th January, 2017

Hotel (pm)}

14:00 - 14.30	Welcome
14:30 - 16:00	ESR/ER short presentations (Chaired by XXXXX)
16:30 - 17:00	Coffee Break
17:00 - 18:00	ESR/ER Short Presentations (Chaired by XXXX)
19:30 - 21:30	Researchers' Dinner - open

TUESDAY 17th January, 2016

Technical Visits (am}, ARKEMA/NTUA (pm}

09:00 - 12:00	Visit of ARKEMA Site in Pierre-Bénite
12:00 - 12:30	Transfer to Hotel
12:30 – 14:00	Lunch
14:00 - 16:00	Patent Strategy (Organized by Arkema)
16:00 – 16:30	Coffee Break
16:30 - 18:00	Integration of Chemical Path (NTUA)
19:30 – 21:30	Dinner Open

WEDNESDAY 18th January, 2017

Hotel all day

09:00 - 10:30	Modelling with Superstructure (NTUA)
10:30 - 11:00	Break
11:00 - 12:30	Integartion for water saving (NTUA)
12:30 – 14:00	Lunch



RENESENG

MARIE CURIE INITIAL NETWORKS (ITN) , **Grant agreement 607415**



16-20 January 2017, Lyon

14:00 - 16:00	Creation of a Spin-off company – Organized by Arkema
16:00 - 16:30	Coffee Break
16:30 - 18:00	Integration of Renewable energy Resources (EPFL)
18:00 - 18:30	Break
18:30 - 20:00	Visit of old Lyon – organized by Arkema
19:30 - 21:00	RENESENG Dinner in Lyon

THURSDAY 19th January, 2017

Hotel all day

09:00-12:00	Debottleneck selected system (NTUA)
12:00 - 13:30	
13:30 - 15:00	
15:00 - 15:30	
15:30 - 17:00	
17:00 - 17:30	
17:30 - 19:00	
19:30 - 21:30	

FRIDAY 20th January, 2017

Hotel (am)

09:00-12:00	



RENESENG

MARIE CURIE INITIAL NETWORKS (ITN) , **Grant agreement 607415**



16-20 January 2017, Lyon

12:00	End and see you in Switzerland ...



RENESENG

MARIE CURIE INITIAL NETWORKS (ITN) , **Grant agreement 607415**



16-20 January 2017, Lyon

REGISTRATION FEE

BEST WESTERN CHARLEMAGNE HOTEL

Single Room PRIVILEGE including breakfast: **102 € / night**

Meeting accommodation: **225 € / person**

Including

Meeting room (from Monday noon to Friday noon)

Lunches (Tuesday, Wednesday, Thursday)

Coffee breaks (1 in the morning + 1 in the afternoon)

Total projected cost: **633 € / person**